



motion
expert in multi axes dimensions



70th Birthday war Parade in Beijing

Summary

Expert in aerial filming and multi-dimensional travelling solutions	2
We help you to select the right solution	4

AIR

Helicopters	6
Eurocopter & Bell	8
Cablecam Multi-Dimensions	10
X fly 3D	12
X fly 2D	14
X fly 1D Horizontal & Diagonal	16
X fly 1D Vertical	18
Muto 1D	20
X fly Mini	22
Giant Crane	24
Mini Aerials / Drones & Kitecam	26

GROUND

Robotic Travelling Vehicles	28
Russian Arm Mini	30
Russian Arm	30
High speed Audi vehicle	32
4x6 Range Rover Crane vehicle	32
Rail Cams Travelling	34
X track & Mini X track	36
ARCAM & Liftarm	38

GYRO-STABILIZED HEADS

GSS Cinema Pro and Cinema Pro+	42
GSS Cineflex	44
Super G GPS	46
Stab C Compact GPS	46
Flight Head Mini	48
XD Cam Mini	48
Tyler Minigyro	50

RF & FIBER EXPERTISE

PACKAGES

Feature Films & Commercials	54
Motion Control	54
TV Sport Athletics	55
TV Sport swimming / Diving / Synchro	55
COMPANIES DISTRIBUTION & SERVICES	56

CLIENTS REFERENCES

Feature Films	58
Commercials	58
TV Sport	59
TV Events	59
CONTACT	60

Expert in aerial filming and multi-dimensional tracking solutions

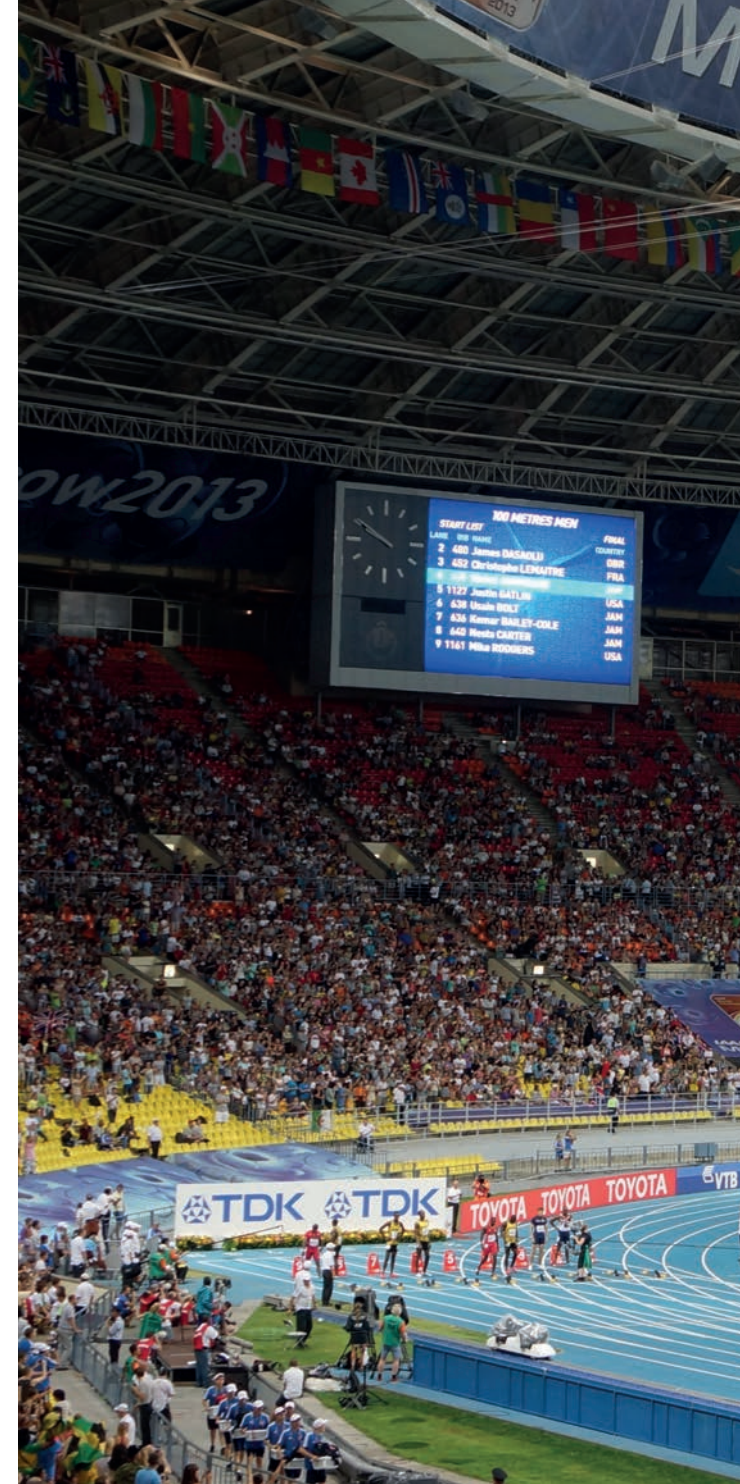
XD motion is an international company expert in aerial filming and multi-dimensional tracking solutions based on innovative gyro-stabilized systems.

We provide aerial shots from helicopters, planes, multi-dimensional cablecam and travelling tracks, robotic arm vehicles and drones. Using the latest gyro-stabilized heads technology from three to six axis, auto horizon axis and open architecture to accommodate all sizes, models of cameras and lense systems existing on the market.

Experte en prises de vue aériennes et tournages multi-dimensions

XD motion est la société internationale experte en prises de vues aériennes et en mouvements à partir de supports de prises de vues gyro-stabilisés innovants.

Prises de vue aériennes à partir d'hélicoptères, d'avions, de travellings sur câbles multi-dimensions ou rails motorisés, véhicules travellings robotisés et drones RPAS. Nous utilisons les dernières technologies de têtes Gyro-stabilisées de 3 à 6 axes avec contrôle automatique d'horizon et architecture ouverte afin d'accueillir tous les modèles, formats de caméras et optiques du marché.



World Championships
MOSCOW 2013



@iaaforg



We help you to select the right solution

We listen to our customers, thoroughly understanding their demands in order to offer the best technical, innovative solutions.

The scope of our services allows us to use our products in the field of feature film, commercials and TV Broadcast HD, using all formats from Digital 2K to 8K, IMAX, 3D stereo or Ultra motion.

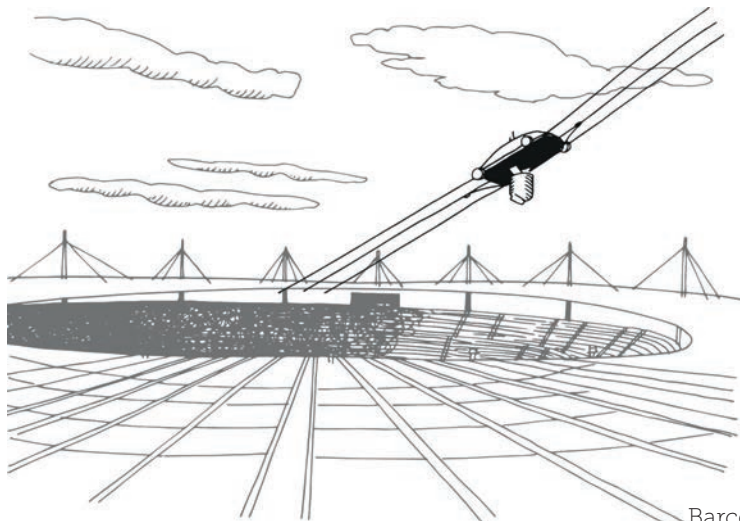
Our expertise in analysing your project will ensure you select the right solution to fit your budget. XD motion provides services worldwide.

Nous vous aidons à choisir la bonne solution

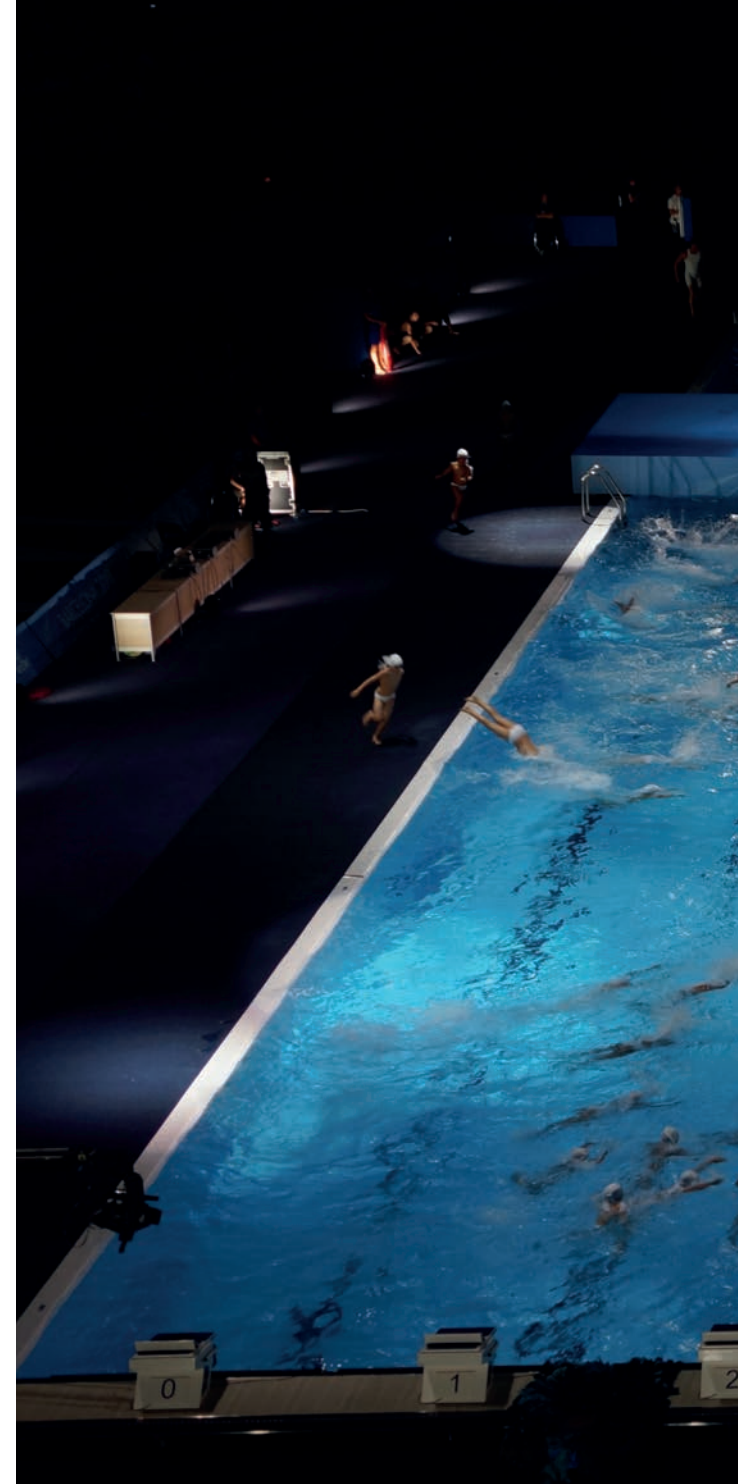
Notre objectif est avant tout de savoir écouter la demande de nos clients et de proposer la solution la plus adaptée techniquement avec nos équipements innovants.

L'étendue de nos prestations permet l'utilisation de différentes techniques associées dans le domaine du Film long métrage, publicitaire, de la TV HD Broadcast et dans tous les formats numériques du 2K au 8K, Imax, 3D stéréo ou Slow motion.

L'expertise que nous apporterons à votre projet est la garantie de trouver la meilleure solution adaptée à votre budget. XD motion propose des prestations de service ou la vente de produits avec suivi d'installation.



Barcelona Swimming World Championships





Helicopters



XD motion works with carefully selected helicopter companies and experienced film pilots around the world. The Squirrel (or A-Star) remains the most suitable helicopter for aerial filming with the single engine AS350 version for use away from built up areas, and the twin engine AS355 to meet regulations for flying over cities.

In some parts of the world, we may also use single or twin-engine Bell helicopters such as the UH1, Long Ranger, Jet Ranger and Bell 407.



Squirrel





Eurocopter & Bell



Eurocopter

The AS350 B2 is equipped with an innovative Starflex rotor blades made entirely of composite materials.

AS 350 B2 Squirrel has a surprisingly roomy, unobstructed cabin, which allows it to carry all gyro-stabilized heads on nose/side bracket with up to three people.

The powerful AS350 B3E is reliable, comfortable, safe and cost-effective. With its lifting power capacity, endurance and maneuverability, the AS350 B3E is always up for the most rigorous hot and high altitude missions.

The AS 355 NP is equipped with two powerful Turbomeca Arrius 1A1 engines. In the event of engine failure during flight, the maximum emergency power is automatically and instantaneously provided to the operating engine, enabling the pilot to concentrate on the external environment.

EC 135 can carry more payloads over longer distances than any twin-engine aircraft in its class, yet and offers excellent one-engine performance even at high altitudes and in hot climates.

The ultimate multi-role helicopter for either land or sea operation is the twin engine EC145.



Squirrel side mount



EC 135 side mount

Bell

The Bell 206 features a high-inertia two-bladed rotor system, while the patented suspension system delivers an incredibly smooth ride.

The Bell UH1 is a military helicopter powered by a single turboshaft engine, with a two-bladed main rotor and tail rotor.



Bell Long Ranger nose



Bell Jet Ranger



Bell UH1 side mount



EC 145 nose mount

Squirrel nose mount

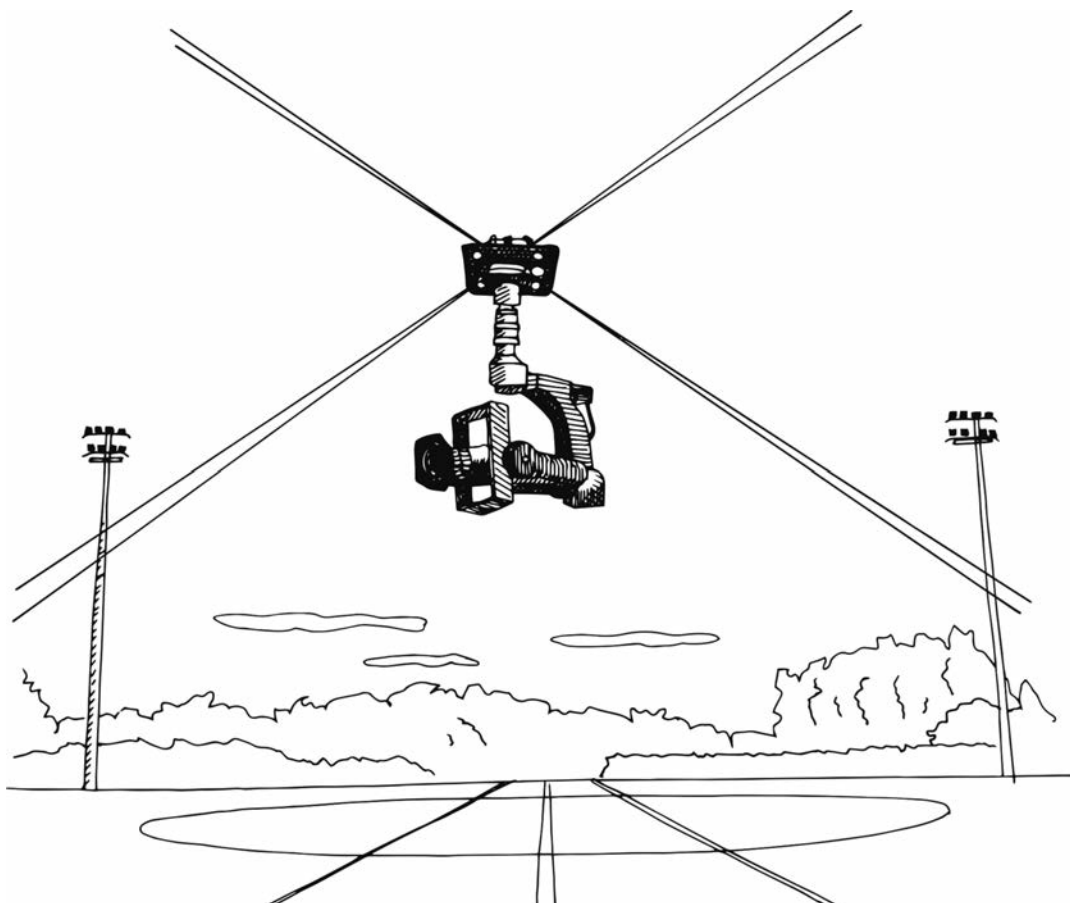


Cablecams Multi-Dimensions



XD motion has developed the unique X fly cable system available in various configurations. All types of cameras can be installed on our gyro-stabilized heads. The skates and dollies carrying the cameras can move in various dimensions depending on the X fly configuration.

All our systems are certified by Bureau Veritas France to fly over audiences.



Poutine's Introduction

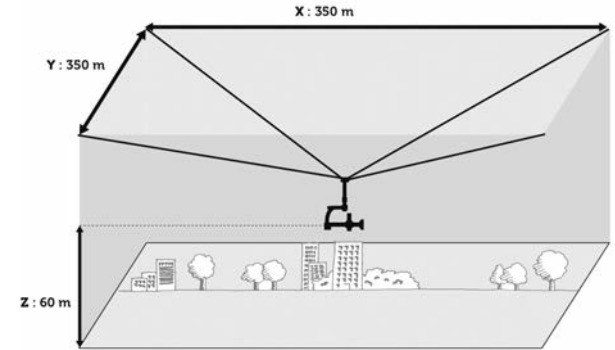




X fly 3D *



With the success of X fly in 1D and 2D, XD motion has developed a new X Fly configuration allowing movement in 3 dimensions. Using the latest technology, the X Fly 3D is based on four fibre rope attachment points and allows the dolly to move left and right, up and down, forward and backward.. Safety-critical software ensures collision avoidance as well as repeatable flight paths. The pilot can concentrate on the camera shots without having to look at the dolly camera. X fly 3D is reality augmented compatible for any actual 3D engine under FreeD protocol. XD motion provide all metadata for XYZ position, XYZ angles and zoom/focus positions.



Soccer Stadium



Fetes des Vignerons Vevey in 4K



Judo Paris Grand Slam 2019



XD Cam on X fly 3D
at Commonwealth Games



European Elections 2019



GSS Cineflex on X fly 3D

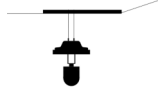


* Motion Control available

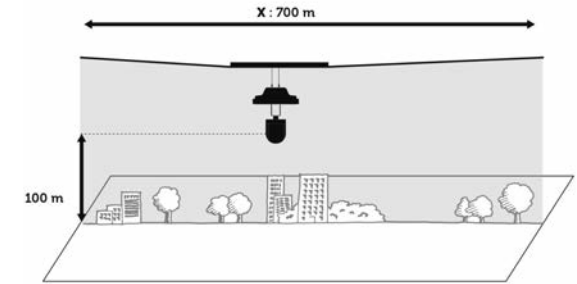
Malaysia 29th Sea Games



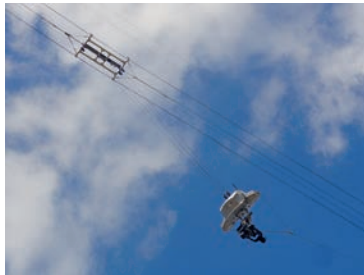
X fly 2D *



Based on the X fly 1D, the X fly 2D allows the camera to move both horizontally and vertically. The ascending and descending motions of the camera are controlled by a motor, which loosens or tightens the support ropes. This enables the pilot to fly the camera in 2 dimensions in real time. Using secure software the pilot can define the safe envelope that the dolly can fly in, therefore ensuring it is impossible for the camera dolly to move into areas where there is risk of collision with external obstacles. The camera platform of the X fly 2D can be fitted with the same cameras as on the 1D system: virtually any camera model!



X fly 2D



X fly 2D motion control
Tarzan



Samsung commercial



World Handball Championship 2017
Paris Bercy Arena



X fly 2D anamorphic
Mylene Farmer Concert



IAAF Athletics World 2013
Championships Moscow



U2 Concert LIVE HBO

* Motion Control available





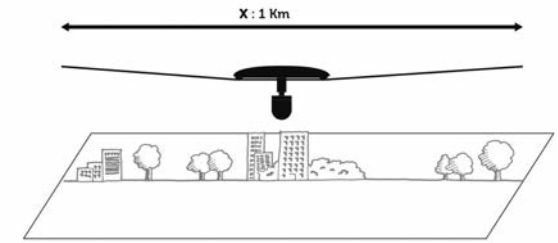
X fly 1D Horizontal & Diagonal *



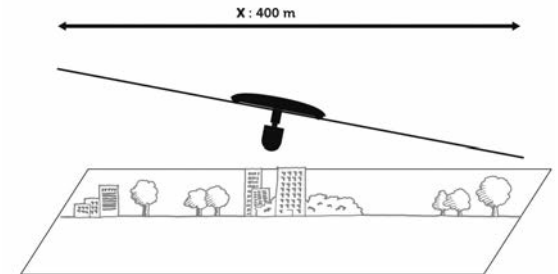
The X fly 1D system offers the possibility to fly a camera using a computer-controlled cable-drive system.

The dolly is supported on two parallel ropes providing increased stability and enabling the X fly 1D to be manoeuvred at high speed and over long distances with no height restriction. Working like a cable car, it is motorised using a separate tensioned drive rope.

The mobile platform of the X fly 1D accepts types of gyro-stabilized heads, therefore working with any HD video or digital cinema camera.



X fly 1D Horizontal



X fly 1D Diagonal



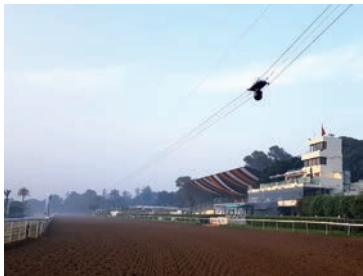
Tomorrowland 2017



UE. Athletics Amsterdam 2016



IAAF Diamond League Paris 2017



Grand Prix Casablanca



Formula-E Championship



Paris Eiffel Jumping

* Motion Control available



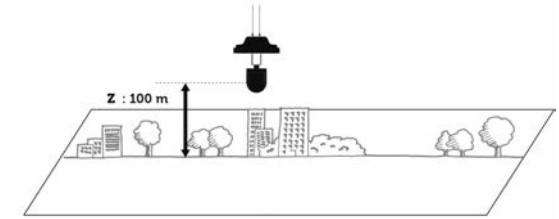


X fly 1D Vertical *



The Vertical version of X fly 1D system allows the camera to fly vertically from the ground to top attachment point.

The dolly is supported on two vertical ropes with no ground obstruction. The motor can be either positioned on the ground or in the roof.



X fly 1D Vertical



Musical 1789



Paris Indoor Athletics EU



Victoires de la Musique Classique



Kids United



Victoires de la Musique Classique



X fly vertical GSS

* Motion Control available



X fly 1D Vertical on Eiffel Tower



Muto 1D

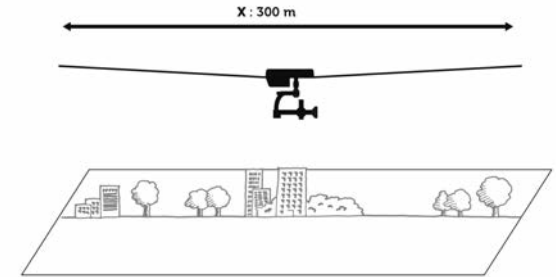


The Muto is defined as a single-cable carrier intelligent chassis with onboard engine and power supply. This new system of aerial wire system is lightweight, ergonomic and totally secure.

This solution is versatile, designed for Indoor and Outdoor venues.

The Muto can be installed above the audience as it passes all safety rules when used with an additional second, optional, safety rope.

Several ropes can be pre-rigged allowing the possibility to move the dolly from one to another very quickly, thanks to a flight data backup system.



Muto

Muto X Motion control:

The motion control version is able to store 10 position points and movements in combination with the Mini Flight Head



Red Bull Cliff Diving



Nouvelle Star



Mawazine Festival



Paris Grand Slam 2016 Judo



H&M Fashion



Paris Bercy 2016 Windsurf indoor



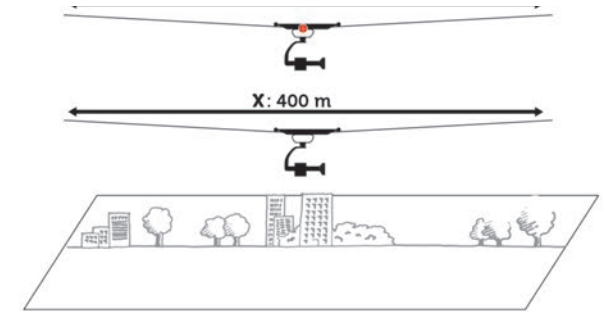


X fly Mini



XD motion offers the X fly Mini with the XD cam Head 3 Axes Gyrostabilised as a package. The X fly Mini keeps your crew fast and small, requiring a single operator to control all the functions of the cablecam, gimbal and lens.

XD cam Head allows smooth motion images on 3 axes thanks to its Gyrostabilized system. It is very easy to use thanks to its RF remote control.



With **onboard motor** up to 8 m/s

With X fly 1D motor up to 15 m/s in motion control



X fly Mini



X fly Mini



X fly Mini - Case



Front, back and accessories



X fly Mini with Alexa Mini





Giant Crane



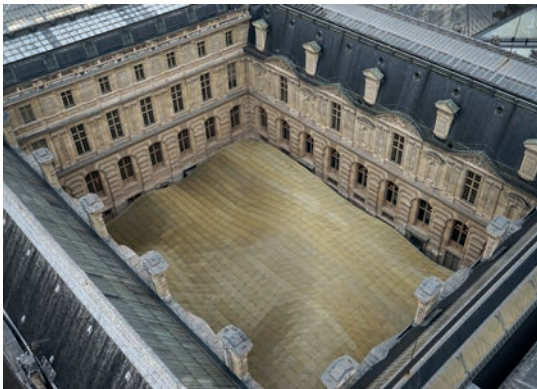
With a platform for gyro-stabilized gimbals, the giant crane is perfect to make precise vertical and lateral travelling. Reaching heights up to 70 metres, depending of the model of crane chosen, this solution works discreetly and safely above the public and solves restricted flight permission issues for aerial shots over cities and historical monuments. Several gyro-stabilized heads are compatible for all type of shots.



Cartier Commercial - Giant crane shot



Opera Garnier Commercial



Le Louvre - Giant crane shot



Formule E Championship - Giant crane shot

« Tour de France » cycling race



Mini Aerials / Drones & Kitecam



To complete our full scale aerial systems, XD motion also provides drones equipped with 2K, 4K or 6K cameras with either on board recording or live RF/Fiber Broadcast downlinks.

Tethered Drone

Our Fiber technology allow us today to present the New Captive drone for long time aerial shooting. This drone is equipped with a Full Broadcast HD camera and zoom lens. Used for beauty shots in safety conditions, shots can be transmit "Live" for hours and days. The 2 members crew allow a mobile and fast installation in different venue locations.

Hexacam Live RF and Hexacam Cinema

Hexacam is our RPAS Drone multi rotor with remote-controlled autopilot system. The onboard electronic equipment features a computer-assisted operating system and enables increased flying time.

Cameras up to a 6K with Prime lense can be mounted for feature and commercial films.

Inspire 2

This is the first filmmaking drone in the world to integrate an HD video transmission system, 360° rotating gimbal and a 4K camera, as well as the simplicity of app control. The launches of the Zenmuse X5 and X5R cameras further cement the Inspire as a critical tool for filmmakers around the globe. The image processing system has been upgraded, recording video at up to 6K in CinemaDNG/RAW and 5.2K in Apple ProRes with Zenmuse X7 camera.



Tethered Drone



Hexacam Live RF



Hexacam Cinema



Inspire 2

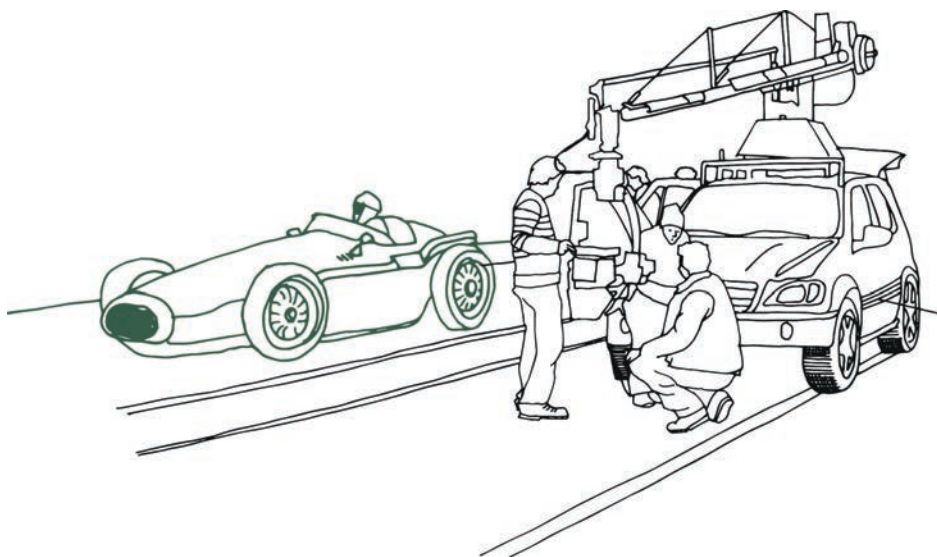


Tethered Drone at soccer stadium



Robotic Tracking Vehicles

Our pursuit vehicles are equipped with motorised arms, cranes or ramps. The New Russian Arm Mini and Russian Arm also have gyro-stabilization on their arms for the pan and tilt axis. Our specialised vehicles are designed for racetrack, road or off road filming.





Russian Arm Mini

The Russian Arm Mini and Flight Head Mini 3 are a new generation of gyro-stabilised robotic camera cranes. The technology has been specifically designed for use on small camera cars and tracking vehicles operating on narrow roads, small sets, and other locations with restricted space. The high-speed mobile mini arm can be mounted on the roof of the hero car or any other mobile platform (boat, truck, bus, train, etc.)

Our Porsche Cayenne GTS, Audi Speedcar S6 and Mini E-RAM are fully equipped to mount the arm.



Mini E-RAM



Russian Arm Mini with
Inspire 2 drone



Toyota commercial

Russian Arm

The Legendary and Academy Award winning Russian Arm is the most flexible and stable camera tracking system on the market.

Our Russian Arm 5 is built with carbon fibre to enable new levels of flexibility from rugged off-road terrain to confined urban areas. It meets the requirements of the most demanding directors and usually surpasses their expectations.



UBS Rogue commercial



Commercial F1



Motorcycle brand commercial

Tag Heuer Commercial



High speed Audi vehicle



This AUDI S6 has been designed to be driven at very high speeds in complete safety on race circuits or on suitable roads. Cameras can be fitted to the front or rear and swapping over can be achieved in under 10 minutes.



Hannibal TV serie



Air France commercial



Peugeot / Red Bull commercial

4x6 Range Rover Crane vehicle



Our Range Rover 4x6 tracking vehicle is equipped with a hydraulic crane for operation up to 130 km/h. The crane allows the camera to be raised up to 5m high with 360° rotation around the vehicle – smoothly and precisely.

The operator is safely seated at the base of the crane which enables maximum visibility in extreme conditions.



Securite routiere commercial



GT Radial commercial

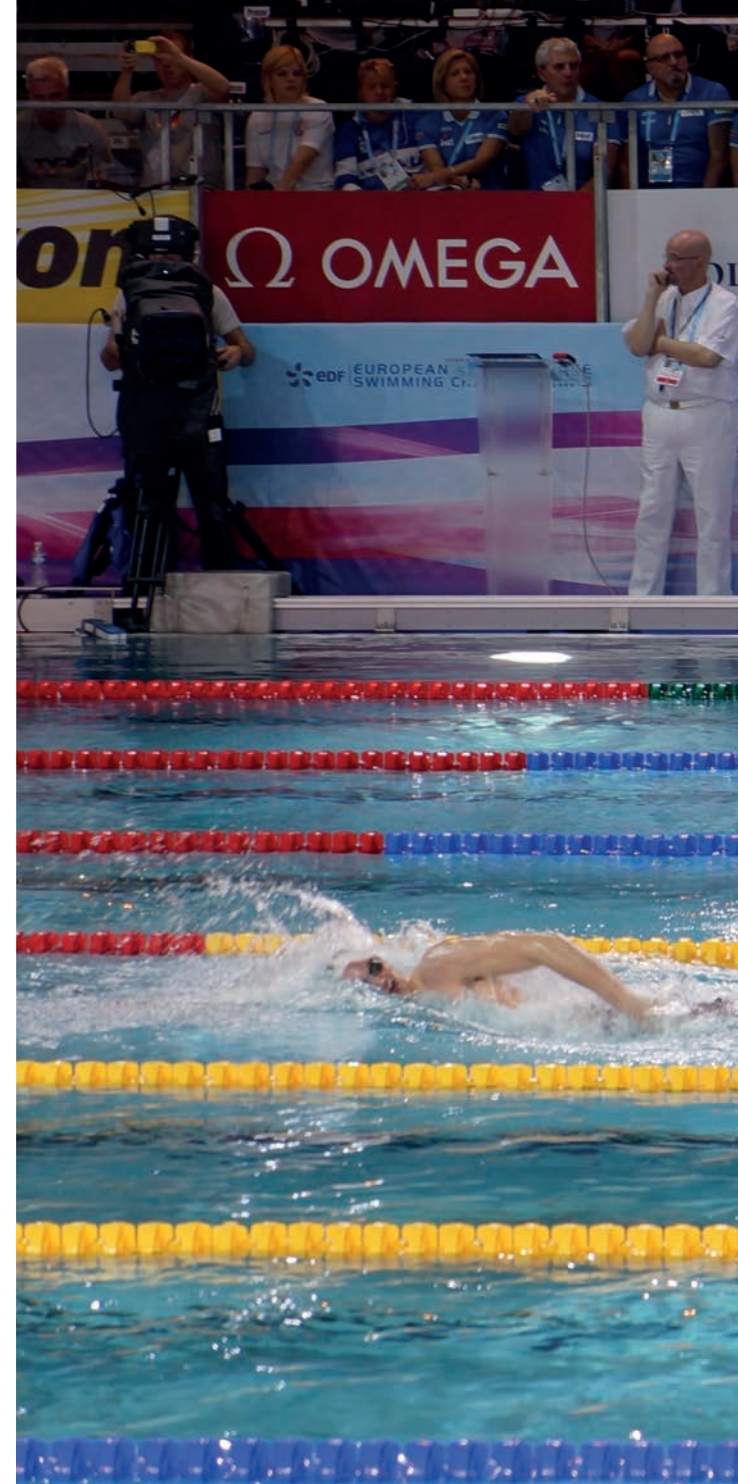
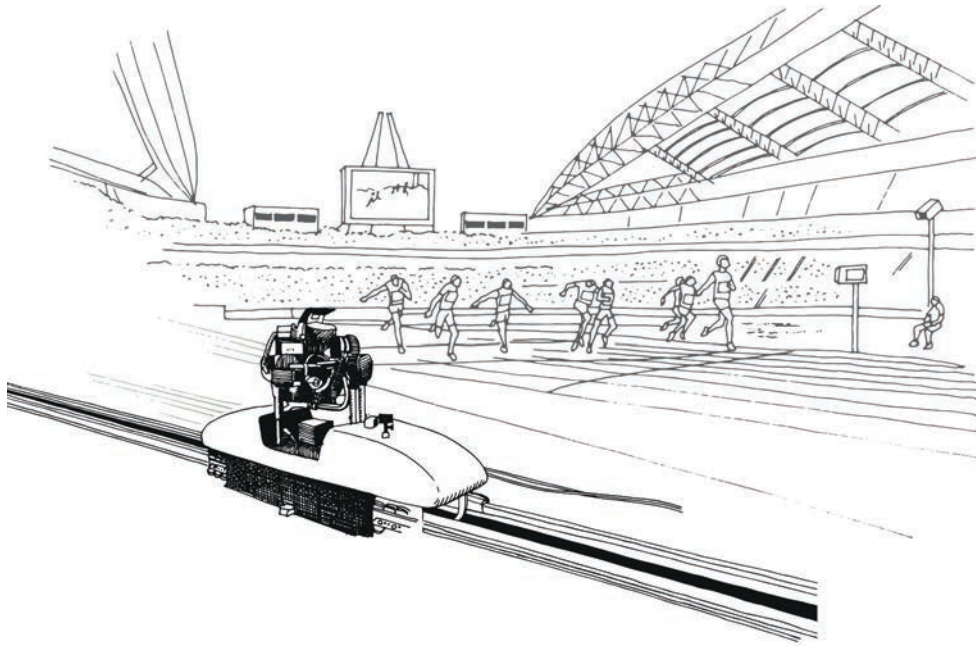


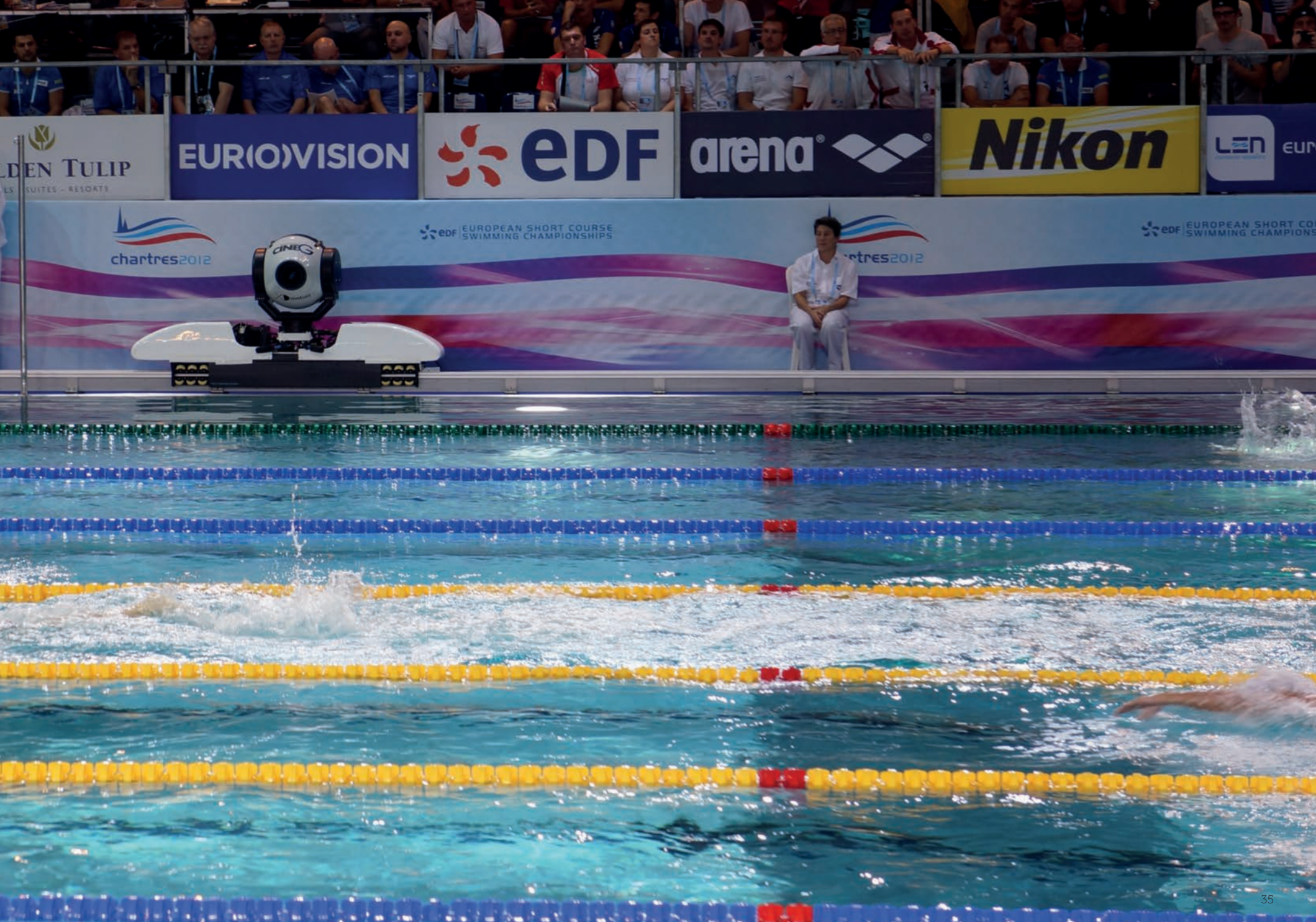
Paris's marathon race



Railcams Travelling

XD motion can provide motorised rail mounted cameras over a variety of distances. High speeds up to 17 metres per second are possible and the systems are capable of carrying a variety of remotely operated two axis or three-to-five axis gyro-stabilised heads.





EDEN TULIP
LES SUITES - RESORTS

EUROVISION

edf

arena

Nikon

LEN

chartres2012

edf EUROPEAN SHORT COURSE
SWIMMING CHAMPIONSHIPS

chartres2012

edf EUROPEAN SHORT COURSE
SWIMMING CHAMPIONSHIPS

X track & Mini X track

X track

This high specification track has been developed using aircraft technology to offer exceptionally smooth and precise configurations with curved and straight sections. The dolly can support a variety of remotely controlled gyro-stabilised heads and used on the ground, or in a hanging configuration from a lighting truss. One or two heads can be installed on the dolly. The cable chain inside the track ensures high quality transmission including Ultra motion cameras.

Mini X track

The Mini X Track offers a more compact and simpler option for a mini two axis camera head but still with a high degree of precision. Tracks can be mount vertically on a light truss. Repeatable Motion Control is also available.



IAAF World Relays Bahamas



17th Asian Games Incheon



29th Sea Games Kuala Lumpur



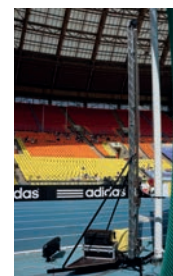
Mylène Farmer concert



Victoires de la Musique Classique



Mini X track



IAAF World
Champ Moscow



ARCAM / IO.BOT & Liftarm

ARCAM

The New 6 axis Robotic ARM is full motion control. Programmed to move (Hi Speed) in three dimensions inside a virtual 2.5 metre diameter sphere. An optional dolly can support the arm upside down. Any camera and lens up to 10kg total payload can be supported on the ARCAM. The IO.BOT software is designed by and for end users to ensure functional and ergonomic satisfaction. Save time and space by controlling all PTZs and robots with one single interface. Arcam is **reality augmented** compatible for any actual 3D engine under FreeD protocol. XD motion provide all metadata for XYZ position, XYZ angles and zoom/focus positions.

Liftarm

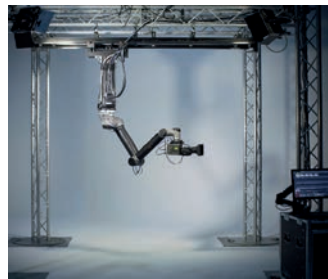
This equipment can be fitted to the X Track dolly to remotely vary the lens height from 80cm to 2m above the rail. Joystick control enables smooth and easy control. Pan and Tilt mini head or Gyro heads can be mounted.



ARCAM TV Dolly & PTZ'S



Hanging ARCAM



ARCAM Canal+



PTZ'S LCI



Classical Music Victories -Liftarm



GYRO-STABILIZED HEADS

Our gyro-stabilised heads are necessary for vibratory and movement stability on our flying and ground products. Depending on the degree of stabilisation required and the focal length used, our range goes from three to six stabilisation axes. Most of our gyro-stabilized heads are designed with an open architecture, allowing the installation of all cameras and lens on the market.



GSS/XD motion booth at NAB 2019 Vegas



GSS – Cinema Pro and Cinema Pro+ Gyro-Stabilized Platform *

With six-axes of movement in a mid-sized platform, the Cinema Pro (formerly the C516) is the best stabilised platform option to integrate the most popular payloads.

The Cinema Pro+ is optimised for larger cinema payloads and integrates more camera and lens payload configurations than any gimbal in its class. With six axes of movement, this gimbal can handle full-sized cinema cameras with impressive lenses. As with all GSS gimbals, the Cinema Pro+ is well-suited for a variety of applications including aerial, ground vehicle, marine mounted and more.



GSS Cinema Pro+ 50-1000 mm



GSS CinemaPro+



GSS Cinema Pro+ on jetfighter



GSS Cinema Pro+ on plane



GSS Cineflex on helicopter



GSS Cinema Pro+ on X fly 1D

* Available in





GSS – Cineflex *



The Cineflex (formerly the B512) is the best stabilised platform option for smaller, broadcast payloads. With five-axis stabilisation and in an extremely small package, this gimbal only weighs 35lbs / 15.87kg (without payload) making it lightweight and versatile.

This new mini gyro-stabilized head GSS complements the Pro and Pro+ versions. This is the sole head gyro - five axis stabilised in low weight / height market.

Intended for applications on light helicopters, we have adapted the GSS Cineflex on our Cablecam X fly 3D to provide extraordinary stability on our flying system. Output metadata is available for special effects and motion control movements.

The Cineflex Pro is the smallest and lightest Gimbal in the world capable of Housing the Sony HDC-P50 4K Camera (Not repackaged/exploded) with the long zoom 4K/UHD lens from either Canon (CJ45ex9.7B) or Fujinon UA46x9.5BE). The entire package weighs <70lbs/31kg.

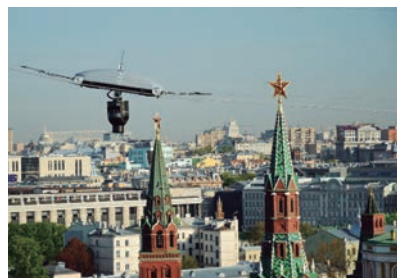
- ALAC Aberration Correction communication between the camera and lens comes standard.
- End of the lens stability at maximum Helicopter speeds is the best in the industry.
- GSS systems are never ITAR controlled. Shipping them around the world does not require special paperwork.
- GSS Cineflex Pro can be packed in excess baggage cases in minutes for easy travel.
- Inertial Navigation System for Moving Map Overlays and Augmented Reality.



GSS Cineflex on X fly 3D



GSS Cineflex on helicopter



Moscow Cineflex on X fly 1D

* Available in





C1000-
C1100

NABSHOW

C1200
C1100

CHIPSHOW

High-End LED Display

Delta Meccanica

FM/DAB
Filters and Combiners

ATV/DTV
Filters and Combiners

RF Components and
Accessories

FM Band Pass Filters
- Double Cavity
- Triple Cavity
- Quadruple Cavity

FM Combiners
- Star Point
- Double Bridge

DAB Combiners
- Star Point
- Double Bridge

Notch Filters

VHF/UHF
Band Pass Filters

VHF/UHF
Channel Combiners

TV/ATV Combiners
- Star Point
- Double Bridge

Isolation Couplers
- Load

GSS

MLTE

CHIPSHOW

Super G GPS *

The Academy Award-Winning SUPER-G redefines the creative possibilities of aerial filming. This unique five axis aerial cinematography system eliminates adverse motion artifacts and can be used on many models of helicopters and aeroplanes to produce stable images throughout a typical 24-290mm zoom range with full look down capability.

Hi speed movements up to 120 knots can be reached on flight.



Super G nose helicopter



Shooting in Dubai



Tahiti documentary

Stab C Compact GPS *

The STAB-C COMPACT (Stabilizing Cradle) is a unique five axis stabilising camera system which eliminates adverse motion artifacts from pan, tilt and roll. The duality of the STAB-C COMPACT allows users the choice of both an Aerial Cinematography System, or a Stabilised Remote Head.



Stab C on Range Rover crane



Stab C nose helicopter



Stab C Compact with 3D camera rig

* Available in 3D and





Flight Head Mini *

This is one of the lightest and most compact stabilised heads on the market.

Due to its lightweight carbon fiber design and stabilisation performance you can achieve unusual shooting angles whilst ensuring very stable images.

It can be used on any type or size of camera crane, dolly, cable rigs. Flight Head Mini 3 offers recorded moves for motion control, shake generator, horizon shift, limits on all axis, automatic drift compensation, wireless control etc.



Flight Head Mini 8K



Tarzan The Untamed



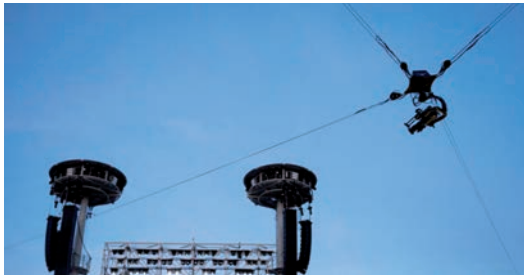
Flight Head Mini on motorcycle

XD Cam Mini *

We are now offering this new threeaxis gyrostabilised head for any project with our Mini Russian Arm, Cablecams X fly and captive Drone systems. With its carbon structure, it is the lightest three axis gyrostabilised head on the market. It is equipped with Slip Ring rotary joint technology which enable to circulate camera and data information with an optimal quality.



XD Cam Mini



XD Cam Mini on X fly 3D



XD Cam Mini on X fly mini

* Available in





Tyler Minigyro

Tyler Minigyro Stabilising camera Mount is one of the first stabilising camera mounts to go from one shooting platform, i.e. helicopter to another such as car or motorcycle, in one easy set up format. Its compact size makes it the perfect choice for working in tight spaces. It offers high quality results for even the budget conscious-projects.



Honda Jet commercial

* Available in





RF & Fiber expertise

XD motion's R&D team develops RF and Fiber solutions to transmit data control for our Gyro-stabilised heads, Video HD/SDI Broadcast, painting control for cameras, sound and comms.

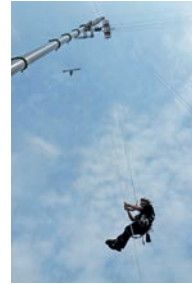
The combination of high-level technologies allows us to use very light transmitters for full HD with low weight fiber ropes in our multi-dimensional cables cameras systems. Our Drones and X fly systems can be used live with long-term safety transmissions for top worldwide events, usually affected by multi frequencies. Our team is trained for RF and Fiber equipment to propose multi solutions package from video monitoring on Feature Films or commercials, up to OB van connections on live events.



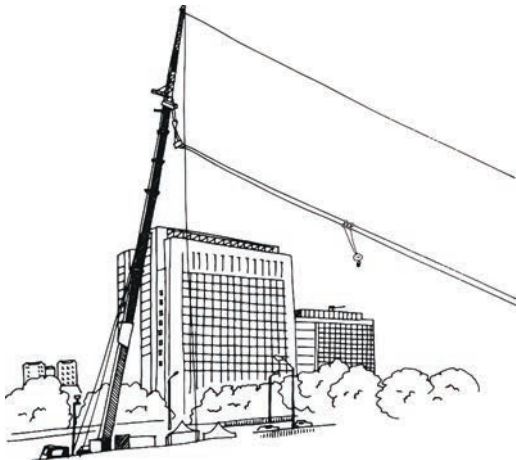
Bell RF relay



Hexacam RF



Rig fiber X fly 2D



Quiantang River





PACKAGES / Feature Films & Commercials

On a car commercial or feature film sequence, we propose a special rate package for ½ day of helicopter with gyro-stabilised head, Stab C Compact or Super G and one day of travelling car with Mini Russian Arm or Audi High Speed car. Also, to establish incredible sequences the new mini travelling point to point on wires: the Muto. The starting rate in Paris for each system at €5,000 / day including crew and equipment.



Commercial: Renault Twizy



Toyota Hilux commercial
Dubai



Stab C Lacoste

PACKAGES / Motion Control

All of our Cablecam systems and the gyro head have full motion control from x,y,z movements, Pan, Tilt, Roll, Zoom and Focus axis. This allow fantastic repeatable movements in motion control for projects such as special effects integration and multipass actions with stunts.



Motion control studio



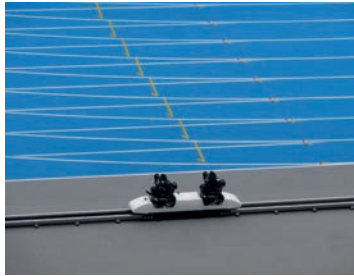
Muto with Flight Head Mini
Tarzan



X fly 1D Hi Speed

PACKAGES / TV Sport Athletics

Following our experience on the World Cup, European Championships and Diamond league, XD motion is providing the specialty equipment designed to cover Athletics Track and Field, the Marathon and walk races. Innovation on such prestigious event is always the goal of our spirit.



X track Incheon 2014



UE Athletics Amsterdam 2016



IAAF Moscow 2013

PACKAGES / TV Sport swimming / Diving / Synchro

From underwater track and remote heads to X fly cameras or X tracks horizontal and vertical, we offer global solutions using our knowledge and experience on the last World Championship 25 & 50 metres, European Championship and national events. We integrated our equipment to the branding of the event to be as close as possible to the athletes without visual obstruction.



Asian Games, Incheon 2014



Asian Games, Incheon 2014



Swimming Championships
Barcelona 2013

COMPANIES DISTRIBUTION & SERVICES

We are the European service and partner support for

Gyro-Stabilized Systems is setting the new standards for Stabilised Platform Solutions. GSS designs feature the ability to interchange cameras, lenses, and sensors in less than 30 minutes, allowing the use of various payload configurations the very same day.



GSS Cinema Pro+



GSS Cineflex

Four decades of experience in Stabilized Remote Heads

Nettmann Systems International is a family-owned, multi award-winning, high-tech development company specialising in unique cinematography equipment for the demanding environment of live broadcast and motion picture production.



Stab-C Compact



Super-G

AR Plus is now part of XD motion

XD motion is proud to announce the purchase of the company AR Plus who design AR Robotics Arms with specific motion control software.

Our engineers will increase the value of the products by adding a new software version iOBot which controls multi PTZ and remote heads and tracks.



ARCAM Up Side Down





REFERENCES / Feature Films



REFERENCES / Commercials



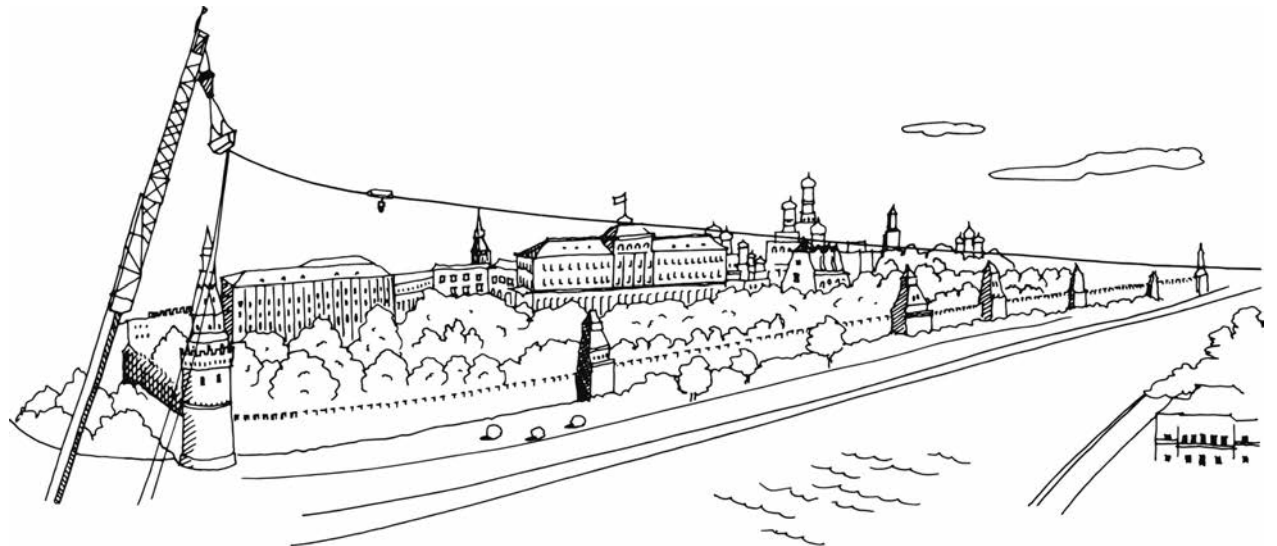


CONTACT

23, Rue des Broderies,
78310 Coignières, **France**
phone: +33 130660534
mobile: +33 642 097 332
contact@xd-motion.com
<http://www.xd-motion.fr>



PRIZES & AWARDS





xd-motion.com

